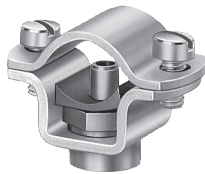


FEATURES AND BENEFITS

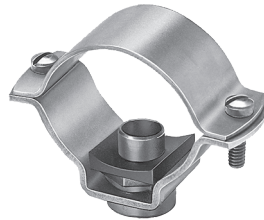
- Fast and economical way to install nozzles, gauges, hoses and other fittings in piping systems.
- Eliminates cutting, threading, brazing.
- Reinstall nozzles in thread-stripped manifolds.
- Connector bodies machined from bar stock brass or stainless steel with a choice of outlet connection sizes.
- No body rotation within the flange when installing or removing nozzles.
- Reduced sediment and minimal clogging as inlet extends into the pipe.
- Leak-proof seal with Buna-N clamp gasket (optional fluoroelastomer gasket available).
- Available in a variety of clamp sizes and pressure ratings.

7521



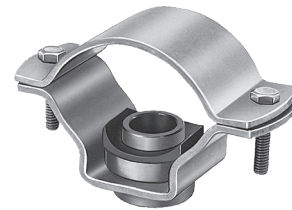
1/2" to 1" clamp size
1/8" to 1/4" outlet connection
NPT or BSPT (F)

8370



1-1/4" to 2" clamp size
1/8" to 1/2" outlet connection
NPT or BSPT (F)

15475



2-1/2" to 4" clamp size
1/4" to 1" outlet connection
NPT or BSPT (F)

SPECIFICATIONS

Body Type	To Clamp On		Outside Conn. (in.)						Maximum Pressure psi (bar)	Capacity at Maximum Pressure gpm (l/min)
	Pipe Size (in.)	Outside Dia. Tubing in. (mm)	1/8	1/4	3/8	1/2	3/4	1		
7521	1/2	13/16, 7/8 (20-22)	●	●					250 (17)	3.5 (13.2)
	3/4	1, 1-1/16 (25-27)	●	●						
	1	1-1/8, 1-1/4, 1-3/8 (32-35)	●	●						
8370	1-1/4	1-9/16, 1-11/16 (39-43)	●	●	●	●		125 (9)	5.5-20* (21-76*)	
	1-1/2	1-3/4, 2 (44-51)	●	●	●	●				
	2	2-1/8, 2-3/8 (54-60)	●	●	●	●				
15475	2-1/2	2-1/2, 2-7/8 (63-73)		●	●	●	●	●	125 (9)	10-54* (38-204*)
	3	3, 3-1/2 (76-89)		●	●	●	●	●		
	4	4, 4-1/2 (102-114)		●	●	●	●	●		

Capacities of 8370 and 15475 Vary with Outlet Conn.	
Outlet Conn. (in.)	Capacity gpm (l/min)
1/8	5.5 (21)
1/4	10 (38)
3/8	15 (57)
1/2	20 (76)
3/4	33 (125)
1	54 (204)

*Capacities of 8370 and 15475 vary with outlet connection



SPLIT-EYELET CONNECTORS



DIMENSIONS AND WEIGHTS

Standard	Body Type	A in. (mm)	B Drill Hole Dia. in. (mm)	C Body Inlet Dia. in. (mm)	D in. (mm)	Net Weight oz. (kg)
	7521	2-1/4 (57)	9/32 (7.1)	3/16 (4.8)	11/16 (17.5)	2 (.06)
	8370	3-15/32 (88)	11/16 (17.5)	7/16 or 9/16 (11.1 or 14.3)	25/32 (20)	6 (.17)
	15475	6-7/16 (164)	1-1/4 (32)	23/32 through 1 (18.3 through 25.4)	1-1/32 (26)	24 (.68)

Based on largest/heaviest version of each type.

MATERIALS

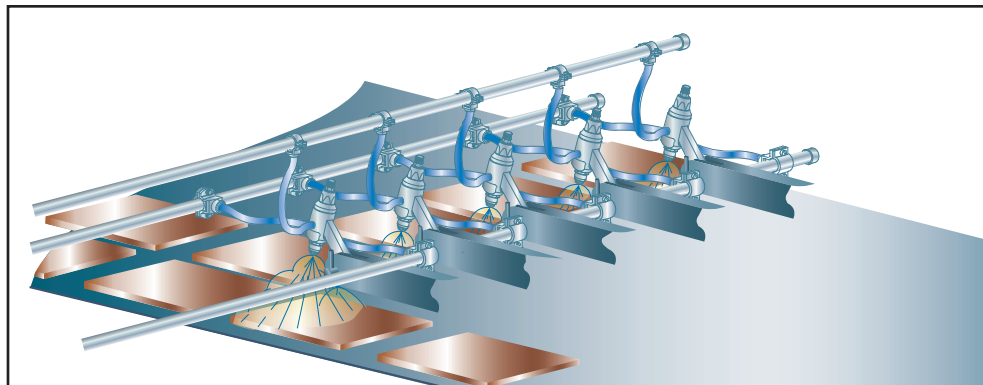
Material	Material Code	Split-Eyelet Type		
		7521	8370	15475
Zinc-plated steel clamps/bolts with brass body	A	●	●	●
Stainless steel throughout	B	●	●	●
Zinc-plated steel clamps/bolts with stainless connector body	C	●	●	●
Stainless steel clamps/bolts with brass body	D	●		
Buna-N clamp gasket		●	●	●
Fluoroelastomer gasket available		●		

Other materials available upon request.

ORDERING INFO

SPLIT-EYELET CONNECTOR			
8370	A	- 1-1/4	x 1/4
Split-Eyelet Connector Type	Material Code	Clamp Size	Outlet Conn.

BSPT connections require the addition of a "B" prior to the inlet connection.



Split-eyelet connectors used with air atomizing nozzles to humidify books prior to bindery operation.



Spraying Systems Co.
Experts in Spray Technology

PHONE 1-800-95-SPRAY, FAX 1-888-95-SPRAY
VISIT OUR WEB SITE: WWW.SPRAY.COM, EMAIL: INFO@SPRAY.COM